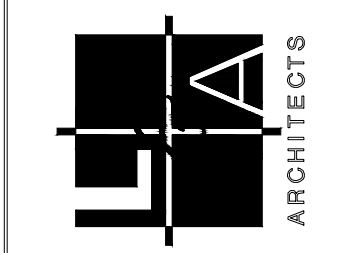


NO.	DATE	DESCRIPTION
1	07/10/10	ISSUE



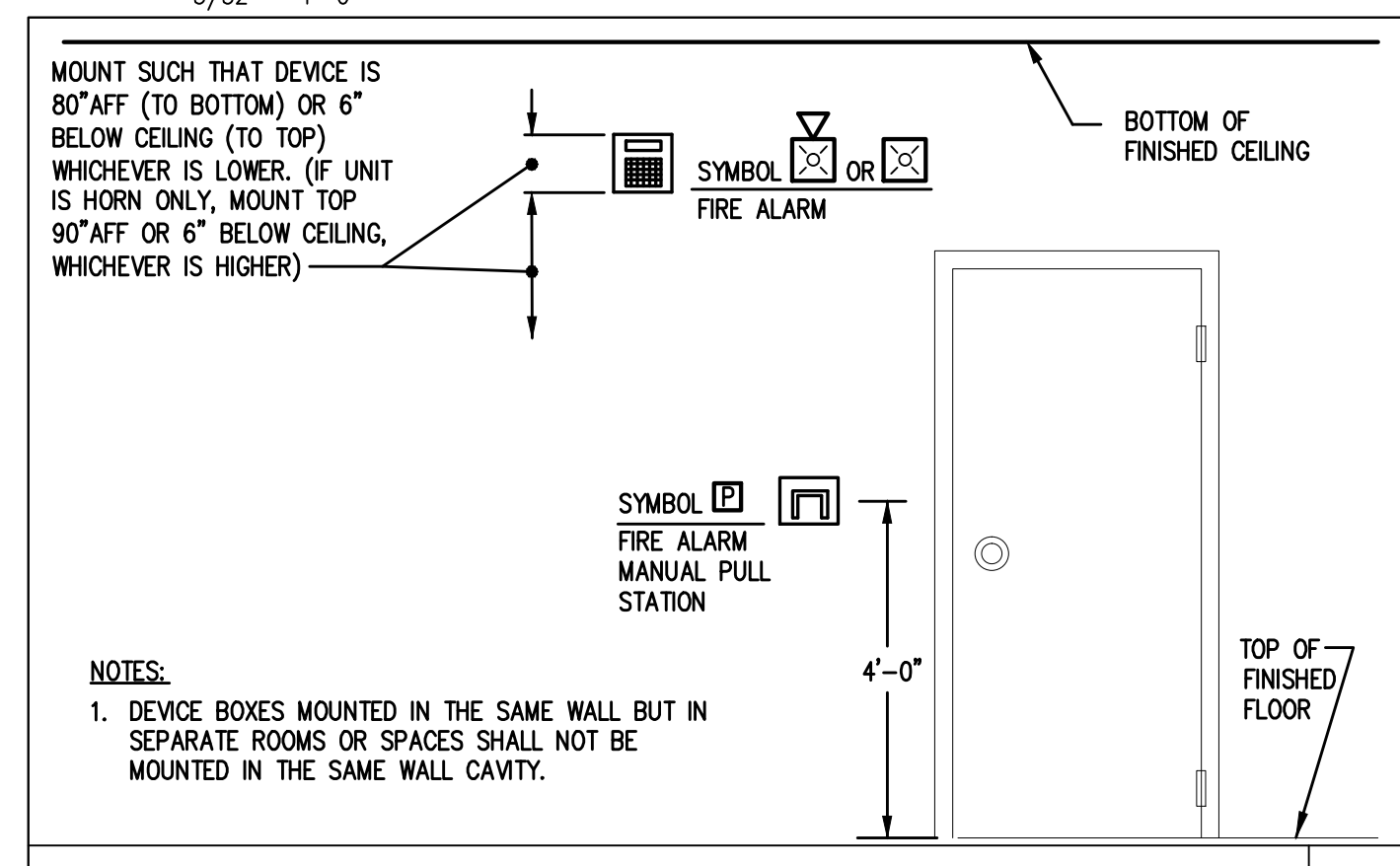
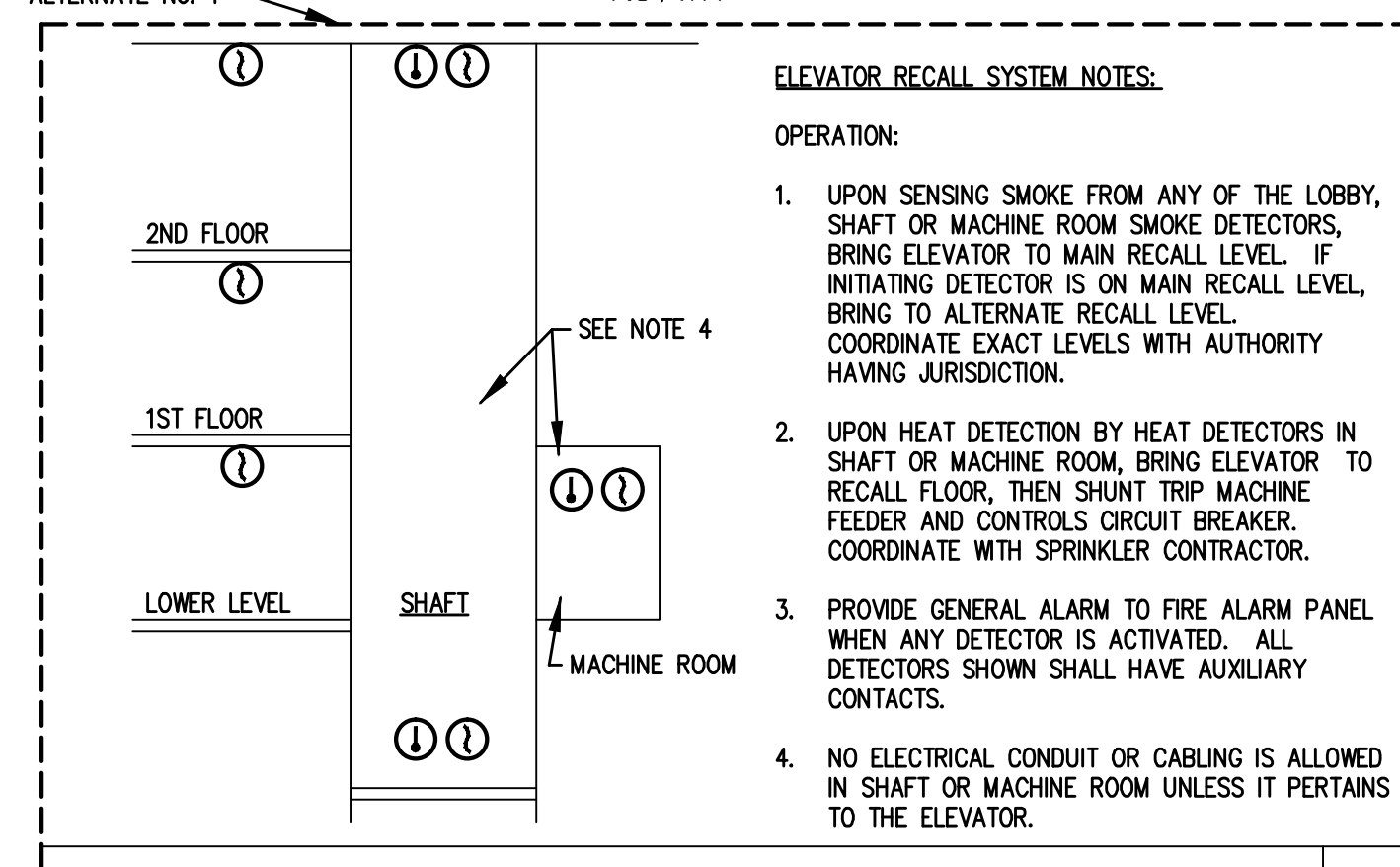
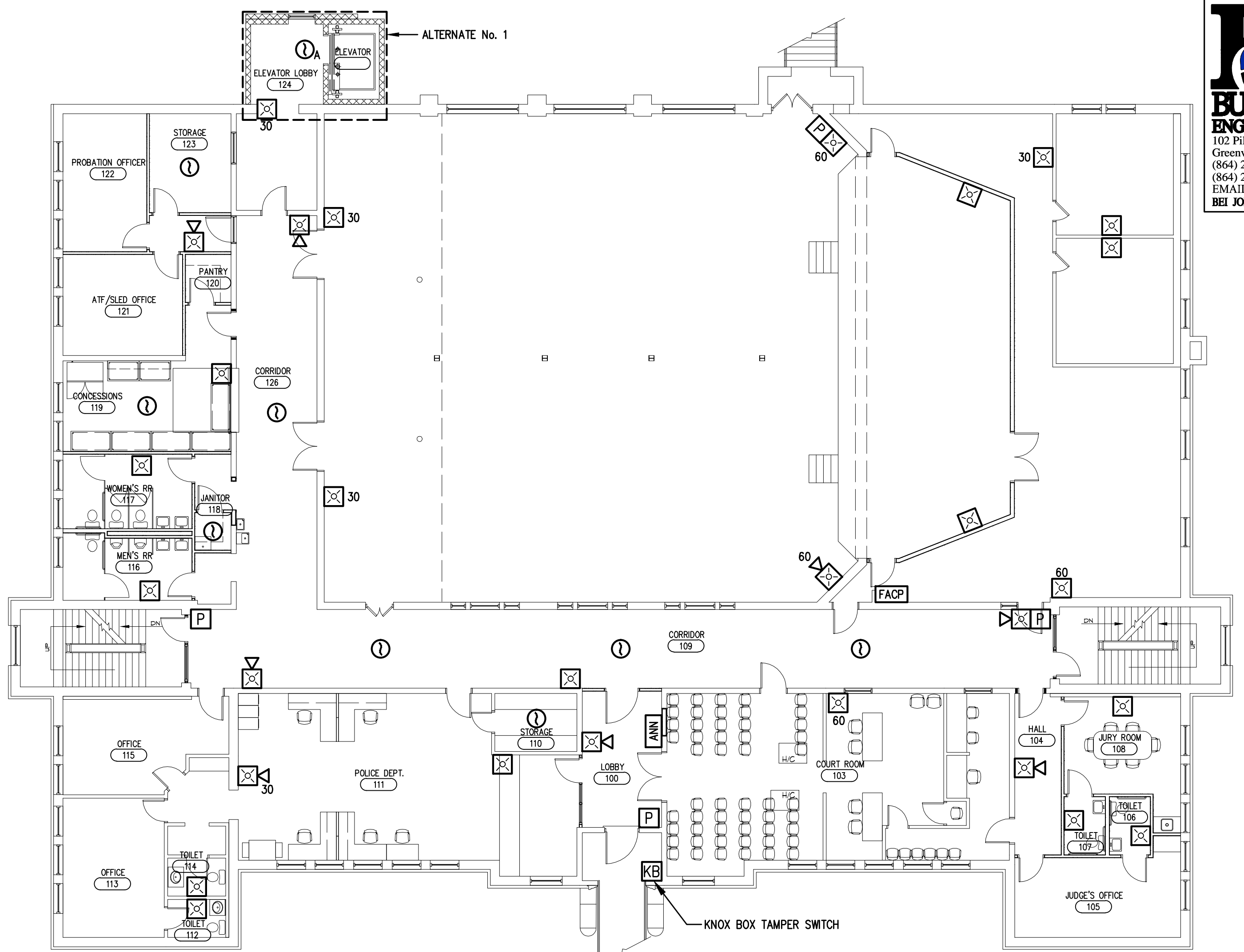
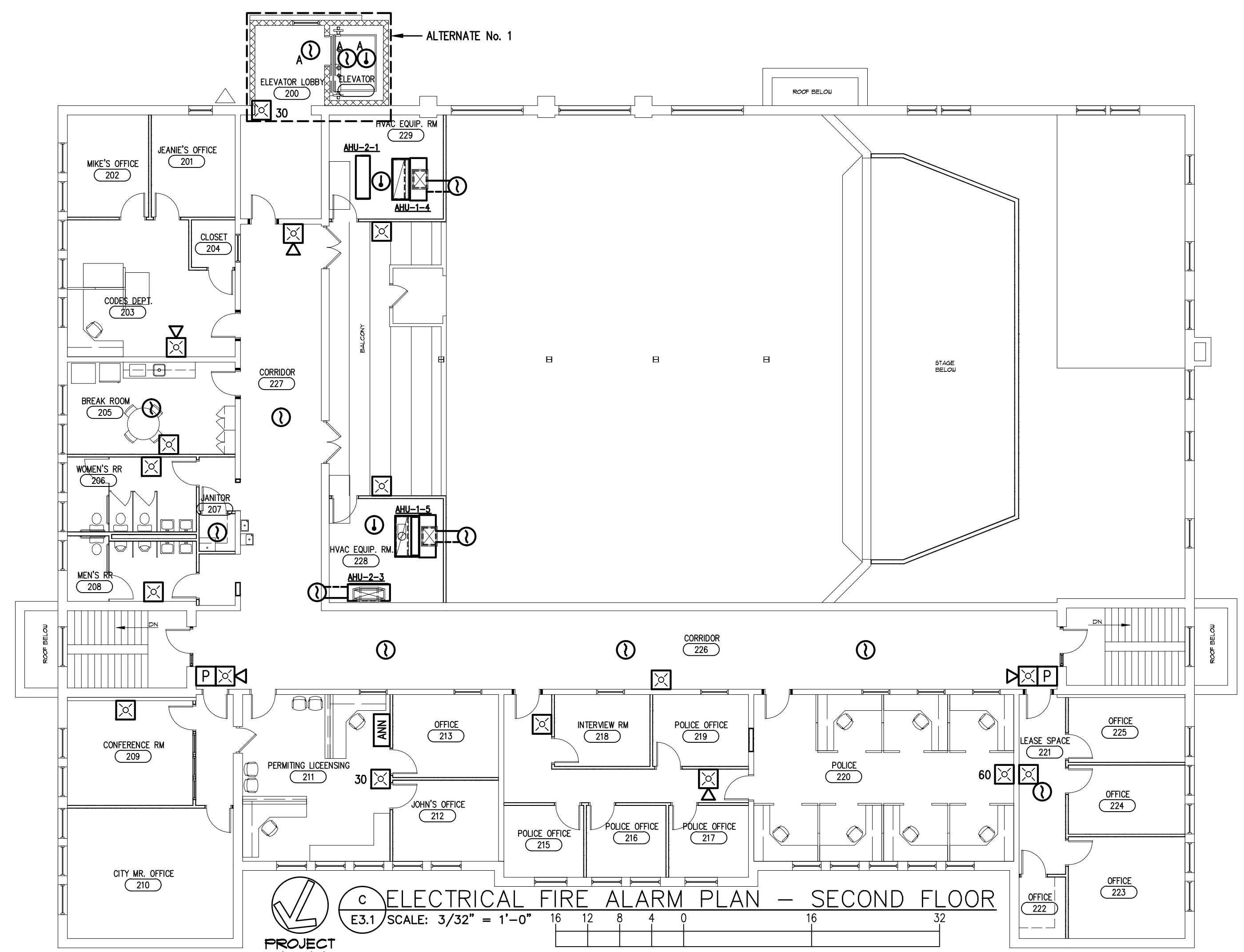
108 SOUTH MAIN STREET  
 GREENER, SOUTH CAROLINA 29850  
 PHONE: (864) 868 - 0224  
 FAX: (864) 968 - 9550  
[www.la-architects.com](http://www.la-architects.com)

**LANGLEY & ASSOCIATES ARCHITECTS, LLC**

**RENOVATIONS FOR WOODRUFF CITY HALL**  
 231 E. HAYNE ST. - WOODRUFF, SC  
**Electrical Fire Alarm Plans**

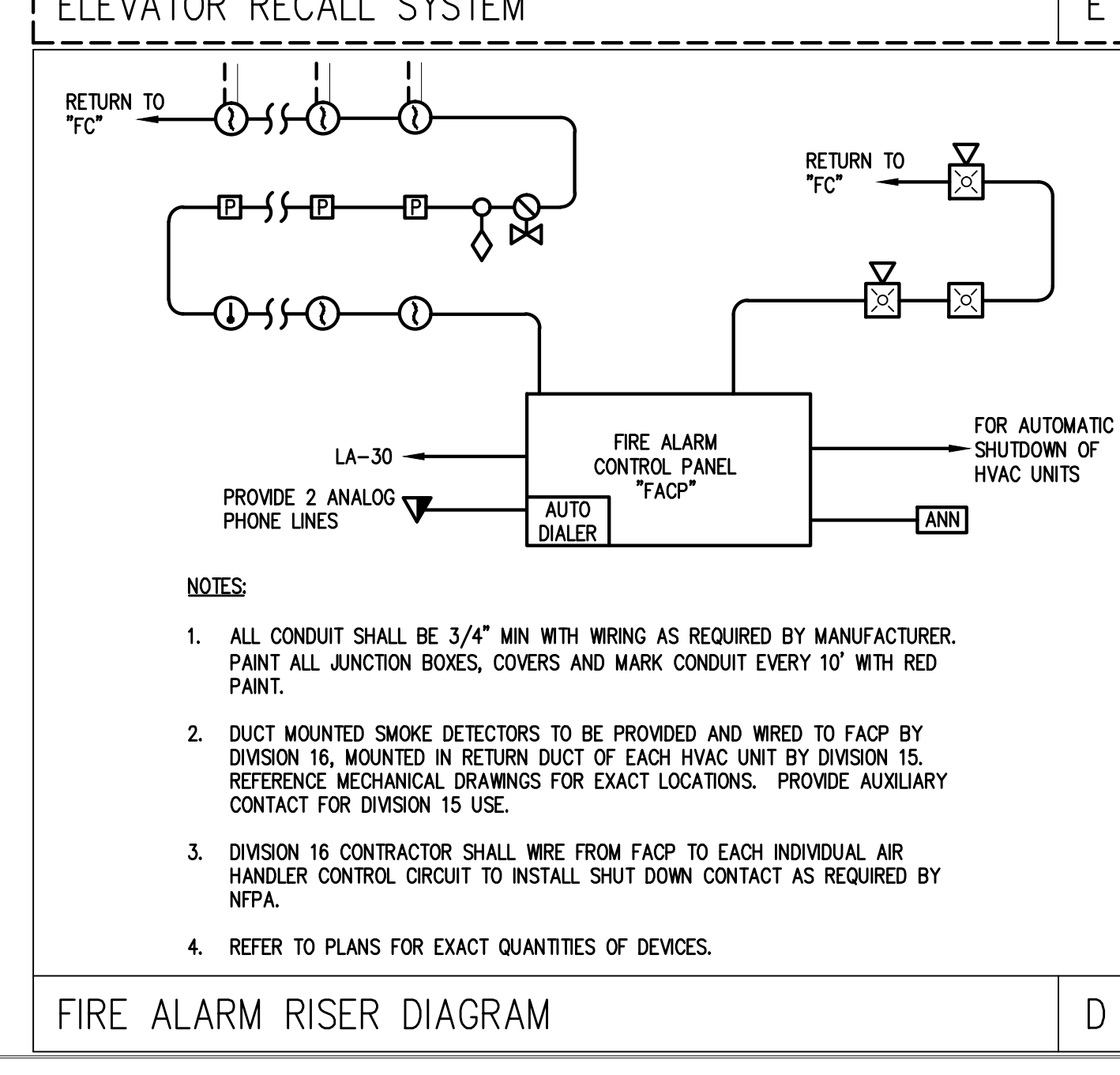
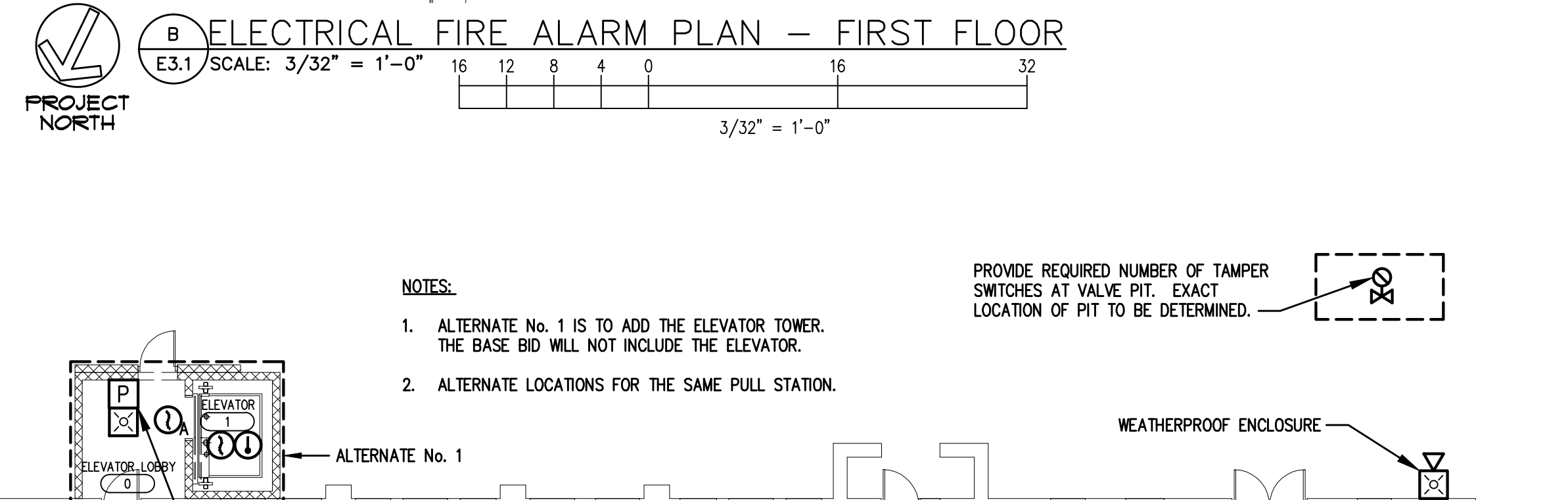
JOB NO: 2010-14  
 DATE: 07.07.10  
 DESC: FOR BID

**E3.1**



**SYM. DESCRIPTION**

[FACP]	FIRE ALARM CONTROL PANEL
[ANN]	REMOTE ANNUNCIATOR PANEL
[A]	AREA SMOKE DETECTOR
[A]	SMOKE DETECTOR, SAME AS ABOVE, EXCEPT SUPPLIED WITH 120 VOLT AUXILIARY CONTACTS.
[A]	DUCT MOUNTED SMOKE DETECTOR
[A]	COMBINATION RATE OF RISE AND FIXED TEMPERATURE OR RATE COMPENSATED HEAT DETECTOR
[A]	WATER FLOW SWITCH
[A]	TAMPER SWITCH
[A]	FIRE ALARM SYSTEM STROBE UNIT ONLY
[A]	FIRE ALARM SYSTEM HORN/STROBE UNIT
[A]	MANUAL FIRE ALARM PULL STATION



FIRE ALARM SYSTEM MATRIX	BUILDING SYSTEM OUTPUTS										CENTRAL COMM.			
MANUAL FIRE ALARM PULL BOXES	X	X										X	X	
AUTOMATIC INITIATION DEVICES	X	X										X	X	X
CORRIDOR SMOKE DETECTOR	X	X										X	X	X
DUCT SMOKE DETECTOR			X											
ELEV. EQ. RMS & 1st FLR ELEV. LOBBY SMOKES	X	X										X	X	X
ELEV. SHAFT & UPPER FLRS ELEV. LOBBY SMOKES	X	X										X	X	X
ELEV. SHAFT & ELEV. EQ. RM. HEAT DETECTORS	X	X										X	X	X
SPRINKLER WATER FLOW	X	X										X	X	X
SPRINKLER TAMPER			X	X								X	X	X
FIRE ALARM A.C. POWER FAILURE				X	X							X	X	X
FIRE ALARM SYSTEM LOW BATTERY				X	X							X	X	X
OPEN CIRCUIT				X	X							X	X	X
GROUND FAULT				X	X							X	X	X
NOTIFICATION APPLIANCE CIRCUIT SHORT				X	X							X	X	X

